

Making Room for More...

SERVICES

Six associates joined the work of Pathways Retreat in 2014. Currently assisting with weekly prayers, retreats and administrative tasks, they are ready to offer individual and group spiritual direction once there is more space.

HOSPITALITY

Enlarging our current meeting area to comfortably hold 20 people will allow us to open our doors to welcome more community, healthcare, and church groups. Prayer and retreat events will be widely publicized, extending the hospitality of Pathways Retreat to the community.

HEALTH

Pathways Retreat is a place that helps the helpers, as 85% of our guests are clergy or others in service professions. Inviting more helpers of our community to honor the balance between work and rest, action and reflection, will create not only renewed helpers, but a more healthy community.



TO DONATE OR INQUIRE FURTHER CONTACT CO-DIRECTORS

Linda Lehman Thomas, MA

Integrative Spiritual Care Minister
Ordained Minister, Mennonite Church USA
574.333.1822

linda@pathwaysretreat.org

Julie Stegelmann, MA

Integrative Spiritual Care Minister
Consecrated Diaconal Minister, ELCA
574.202.2864

julie@pathwaysretreat.org

CAPITAL CAMPAIGN COMMITTEE

Evan J. Miller

574.536.0970

evanjmiller@frontier.com

Melissa Schroeder

574.830.5350

melissaschroeder.direction@gmail.com

Sherry Anderson

574.536.1549

sherry.direction@gmail.com

Pathways Retreat is a 501(c)3
not for profit organization
governed by a board of directors.



RETREAT HOUSE EXPANSION PROJECT

Making Room for More



309 ½ Hackett Road
Goshen, IN 46528

PathwaysRetreat.org

WHAT AND WHY...

MAIN LEVEL

HANDICAP ACCESSIBILITY

Accessibility inside our current facility is limited. The expansion creates an accessible bathroom, office, and meeting area on the main floor making our ministries available to all.

MEETING ROOM FOR RETREAT ACTIVITIES AND COMMUNITY GROUPS

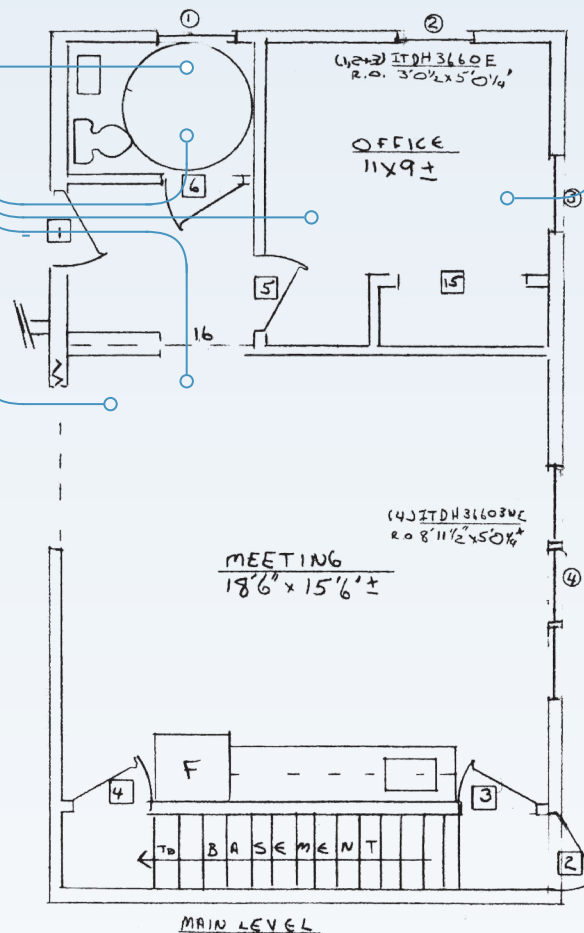
Our small meeting space severely limits our ability to open our doors to the community. We turn away numerous community groups looking for a quiet meeting space, and limit publicity of our services because we can't handle more than eight people. The expansion includes a meeting room for 20 people which more than doubles our current space.

WASHROOMS

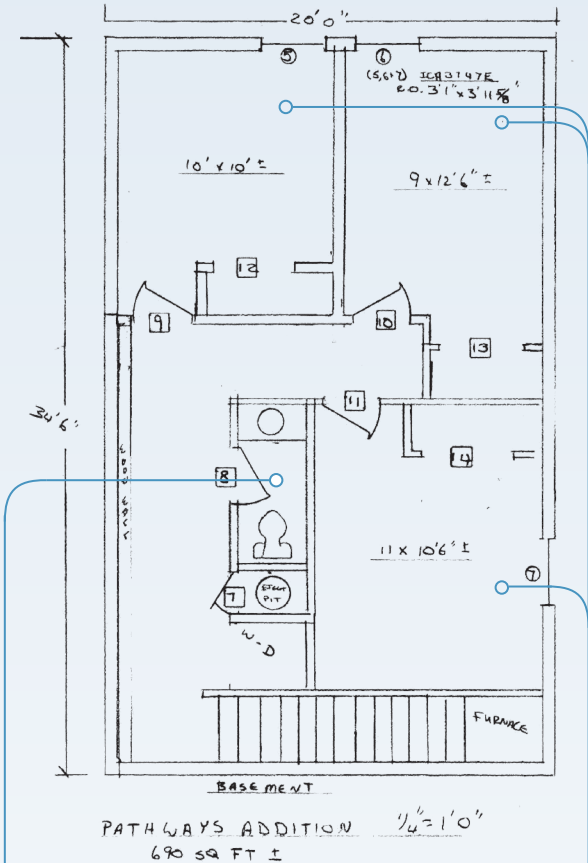
Two additional washrooms (one that is ADA accessible) are important for hospitality.

OFFICE SPACE

The retreat house has one office and we have two directors on staff. For over six years our co-directors have shared this space with only one of them able to meet with individuals at a time. The expansion includes a necessary second office.



LOWER LEVEL



GUEST AND MEETING ROOMS

Three small rooms provide space for people to go for solitude during retreat break-out times, additional individual retreat space, and room for our associates to provide spiritual direction.